



**India Meteorological Department
(Ministry of Earth Sciences)**

HOURLY UPDATE ON CYCLONIC STORM 'TAUKTAE' OVER SAURASHTRA

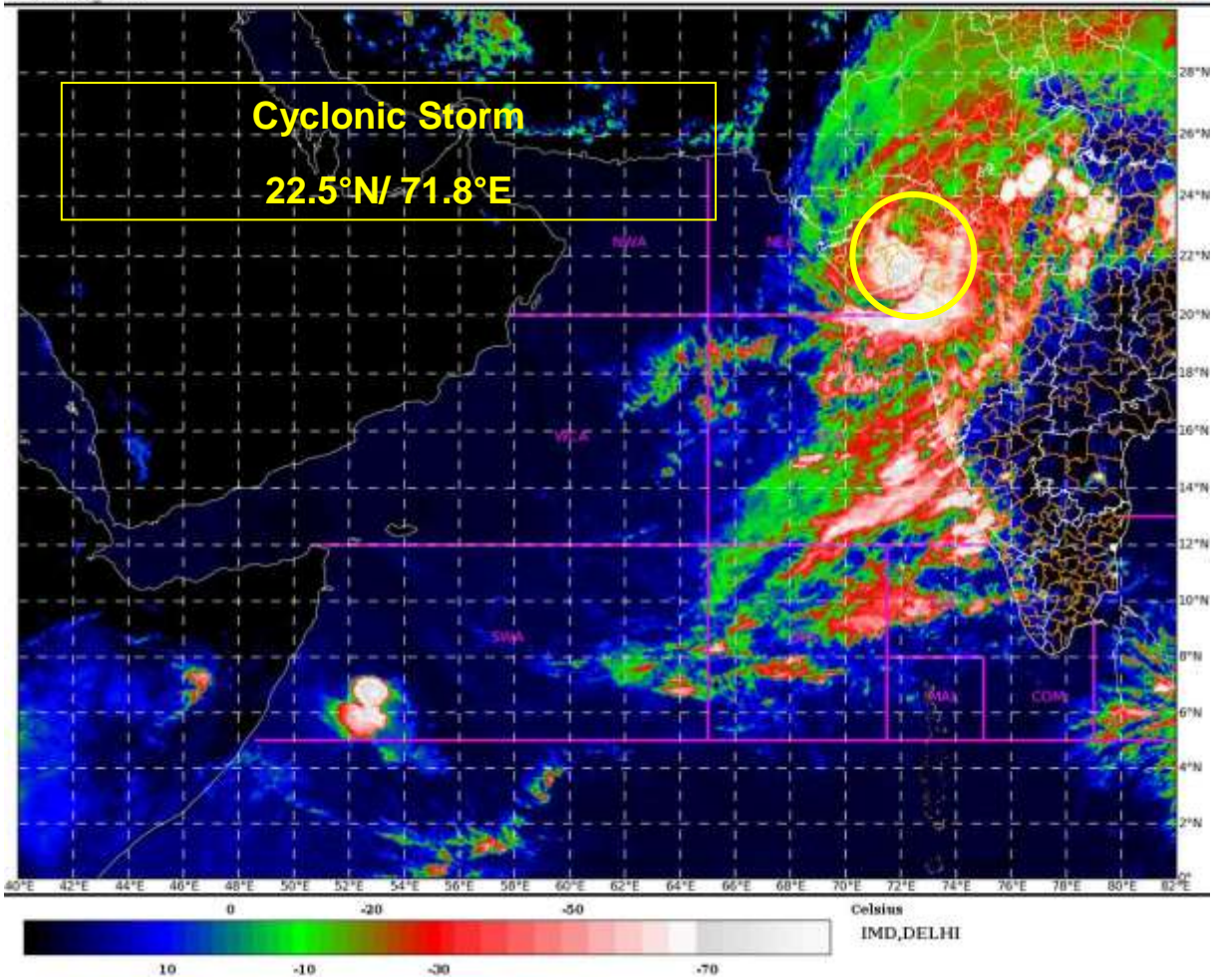
BULLETIN NO. 29

DATE: 18-05-2021

TIME OF ISSUE: 1530 HRS IST

DATE/TIME (IST) OF OBSERVATION	BASED ON 18-05-2021 (1430 HRS IST)
LOCATION LATITUDE/LONGITUDE	THE CYCLONIC STORM 'TAUKTAE' LAY CENTRED AT 1430 HRS IST OF 18TH MAY 2021 OVER SAURASHTRA, NEAR LAT. 22.5°N AND LONG. 71.8°E, ABOUT 190 KM SOUTH-SOUTHWEST OF DEESA, 105 KM SOUTH-SOUTHWEST OF AHMEDABAD AND 35 KM SOUTHWEST OF SURENDRANAGAR.
CURRENT INTENSITY NEAR CENTRE	75-85 KMPH GUSTING TO 95 KMPH
PAST MOVEMENT	MOVED NORTH-NORTHEASTWARDS WITH A SPEED OF 18 KMPH DURING PAST 06 HOURS.
FORECAST MOVEMENT AND INTENSITY	IT WOULD FURTHER MOVE NORTH-NORTHEASTWARDS AND WEAKEN GRADUALLY INTO A DEEP DEPRESSION DURING NEXT 06 HOURS.
FORECAST RAINFALL	LIGHT TO MODERATE RAINFALL AT MANY PLACES WITH HEAVY TO VERY HEAVY FALLS AT ISOLATED PLACES OVER GUJARAT REGION AND SAURASHTRA ON 18 TH MAY.
FORECAST WIND SPEED (KMPH)	GALE WIND SPEED REACHING 80-90 KMPH GUSTING TO 100 KMPH IS LIKELY TO PREVAIL OVER GULF OF KHAMBAT & ADJOINING NORTHEAST ARABIAN SEA DURING NEXT 06 HOURS. IT IS LIKELY TO REDUCE GRADUALLY THEREAFTER. SQUALLY WIND SPEED REACHING 40-50 GUSTING TO 60 KMPH ALONG & OFF EXTREME NORTH MAHARASHTRA COAST DURING NEXT 06 HOURS. GALE WINDS SPEED REACHING 80-90 KMPH GUSTING TO 100 KMPH LIKELY TO PREVAIL OVER AMRELI, BHAVNAGAR, BOTAD, 70-80 KMPH GUSTING TO 90 KMPH OVER SURENDRANAGAR, RAJKOT, ANAND, SOUTH AHMEDABAD: 55-65 KMPH GUSTING TO 75 KMPH OVER DIU, GIR SOMNATH, JUNAGARH, KHEDA, BHARUCH, JAMNAGAR, PORBANDAR & MORBI DURING NEXT 06 HOURS AND GRADUALLY DECREASE THEREAFTER. SQUALLY WIND SPEED REACHING 45-55 KMPH GUSTING TO 65 KMPH LIKELY TO PREVAIL ALONG AND OFF DADRA, NAGAR HAVELI, DAMAN, VALSAD, NAVSARI, SURAT, DISTRICTS AND 35-45 KMPH GUSTING TO 55 KMPH OVER DEVBHOOMI

	<p>DWARKA & KUTCH DURING NEXT 06 HOURS AND GRADUALLY DECREASE THEREAFTER.</p> <p>SQUALLY WIND SPEED REACHING 45-55 KMPH GUSTING TO 65 KMPH IS LIKELY TO PREVAIL OVER SOUTH RAJASTHAN FROM THE EVENING OF 18TH TILL 19TH EARLY MORNING.</p>
<p>FORECAST STORM SURGE</p>	<p>TIDAL WAVE ABOVE ASTRONOMICAL TIDE IS LIKELY TO INUNDATE COASTAL AREAS DURING NEXT 03 HOURS, AS PER DETAILS BELOW:</p> <p>ABOUT 1-2 METER (M) OVER ANAND, AMRELI, GIR SOMNATH, DIU & BHAVNAGAR, BHARUCH, SOUTHERN PARTS OF AHMEDABAD DURING NEXT 03 HOURS.</p>
<p>REALISED WEATHER</p> <p>GUJARAT & DIU</p>	<p>WIND REPORTED AT 1430 HOURS IST OF 18.05.2021: SURAT: 38 KMPH, BHAVNAGAR: 55 KMPH, RAJKOT: 48 KMPH AND AHMEDABAD: 70 KMPH</p> <p>RAINFALL IN CM (REPORTED DURING 0830 HOURS IST OF 17.05.2021 TO 0830 HOURS IST OF 18.05.2021): BAGASARA (AMRELI DISTT): 21.2 CM, SURAT- 9.3 CM, DIU: 8.6 CM, BHAVNAGAR: 7.8 CM, AMRELI – 12.5, GIR GADHADA (GIR SOMENATH)-18.5, UNA (GIR SOMENATH): 17.5 CM, UMERGAM (VALSAD): 18.3 CM, SAVARKUNDLA (AMRELI): 16.7 CM, PALITANA (BHAVNAGAR): 15.8 CM, AMRELI (AMRELI); 13.1 CM, MAHUA (BHAVNAGAR): 12.8 CM, RAJULA (AMRELI): 12.7; KHAMBHA (AMRELI): 12.7 CM, BABRA (AMRELI): 12.7 CM, GADHDA (BOTAD): 10.5 CM, VISAVDAR (JUNAGARH): 9.7 CM, UMRALA (BHAVNAGAR): 8.5 CM, DHARI (AMRELI): 7.2 CM, BHAVNAGAR (BHAVNAGAR): 7.1 CM, JESAR (BHAVNAGAR): 6.8 CM. .</p>





OBSERVED AND FORECAST TRACK ALONGWITH CONE OF UNCERTAINTY OF CYCLONIC STORM "TAUKTAE" OVER SAURASHTRA BASED ON 0600 UTC OF 18TH MAY, 2021



DATE/TIME IN UTC
 IST=UTC + 0530
 L: LOW PRESSURE AREA
 WML: WELL MARKED LOW PRESSURE AREA
 D: DEPRESSION (17-27 KT)
 DD: DEEP DEPRESSION (28-33 KT)
 CS: CYCLONIC STORM (34-47 KT)
 SCS: SEVERE CYCLONIC STORM (48-63KT)
 VSCS: VERY SEVERE CYCLONIC STORM (64-89 KT)
 ESCS: EXTREMELY SEVERE CYCLONIC STORM (90-119 KT)
 SuCS: SUPER CYCLONIC STORM (\geq 120 KT)

- LESS THAN 34 KT
- 34-47 KT
- \geq 48 KT
- OBSERVED TRACK
- FORECAST TRACK
- CONE OF UNCERTAINTY



OBSERVED AND FORECAST TRACK ALONGWITH QUADRANT WIND DISTRIBUTION OF CYCLONIC STORM "TAUKTAE" OVER SAURASHTRA BASED ON 0600 UTC OF 18TH MAY, 2021



DATE/TIME IN UTC
 IST=UTC + 0530
 L: LOW PRESSURE AREA
 WML: WELL MARKED LOW PRESSURE AREA
 D: DEPRESSION (17-27 KT)
 DD: DEEP DEPRESSION (28-33 KT)
 CS: CYCLONIC STORM (34-47 KT)
 SCS: SEVERE CYCLONIC STORM (48-63KT)
 VSCS: VERY SEVERE CYCLONIC STORM (64-89 KT)
 ESCS: EXTREMELY SEVERE CYCLONIC STORM (90-119 KT)
 SuCS: SUPER CYCLONIC STORM (≥ 120 KT)

● LESS THAN 34 KT
 ○ 34-47 KT
 ⊙ ≥ 48 KT
 — OBSERVED TRACK
 — FORECAST TRACK
 — CONE OF UNCERTAINTY
AREA OF MAXIMUM SUSTAINED WIND SPEED:
 ■ 28-33 KT (52-61 KMPH)
 ■ 34-49 KT (62-91 KMPH)
 ■ 50-63 KT (92-117 KMPH)
 ■ ≥ 64 KT (≥118 KMPH)

IMPACT OVER THE SEA

MSW (knot/kmph)	Impact	Action
28-33 (52-61)	Very rough seas	Total suspension of fishing operations
34-49 (62-91)	High to very high seas	Total suspension of fishing operations
50-63 (92-117)	Very high seas	Total suspension of fishing operations
≥ 64 (≥118)	Phenomenal	Total suspension of fishing operations

HEAVY RAINFALL WARNING FOR GUJARAT STATE TILL 0830 HOURS IST OF 19TH MAY



HEAVY RAINFALL WARNING FOR GUJARAT STATE FROM 0830 HOURS IST OF 18TH TO 0830 HOURS IST OF 19TH MAY

WIND WARNING FOR GUJARAT STATE FOR NEXT 06 HOURS

